

This Research Report is issued under the fixed designation RR: D16-1048. You agree not to reproduce or circulate or quote, in whole or part, this document outside of ASTM International Committee/Society activities, or submit it to any other organization or standards body (whether national, international or other) except with the approval of the Chairman of the Committee having jurisdiction and the written authorization of the President of the Society. If you do not agree to these conditions, please immediately destroy all copies of this document. *Copyright ASTM International, 100 Barr Harbor Drive, West Conshohocken, PA 19428. All rights reserved.*

1 August 2013

**Committee D16 on Aromatic Hydrocarbons and Related Chemicals
Subcommittee D16.02 on Oxygenated Aromatics**

Research Report: D16-1048

**Intralaboratory Study to Establish Precision Statements for ASTM D
D7884-2013, Standard Test Method for Determination of 4-
Carboxybenzaldehyde and p-Toluic Acid in Purified Terephthalic Acid
by Reverse Phase High Performance Liquid Chromatography**

Technical contact:

Analytical specialist
Yuhong Zhang
SINOPEC
Shanghai, 201208
China
86-21-68462281
zhangyh.sshy@sinopec.com

ASTM International
100 Barr Harbor Drive
West Conshohocken, PA 19428-2959

1. Introduction:

The presence of 4-CBA and p-TOL in PTA used for the production of polyester is undesirable because they can slow down the polymerization process, and 4-CBA is also imparting coloration to the polymer due to thermal instability. Determining the amount of 4-CBA and p-TOL remaining from the manufacture of PTA is often required.

This test method covers the determination of the 4-Carboxybenzaldehyde (4-CBA) and p-Toluic acid (p-TOL) in purified terephthalic acid (PTA) by reverse phase high performance liquid chromatography (HPLC). This method is applicable for 4-CBA from 2 to 500 mg/kg and for p-TOL from 10 to 500 mg/kg, respectively.

This test method is suitable for setting specifications and for use as an internal quality control tool where these products are produced or are used.

2. Test Method:

Reverse Phase HPLC Method- PTA sample is dissolved in ammonium hydroxide solution, and a fixed volume of this solution is injected into a high performance liquid chromatograph equipped with a UV detector. A C₁₈ chemically bonded column is used to separate the impurities 4-CBA and p-TOL from PTA. The external standard calibration is used for quantification.

3. Participating Laboratory:

The following laboratory participated in this study:

China Petrochemical Corporation

1658 Pudong Beilu

SHANGHAI, SH

201208

CN

Yuhong Zhang

zhangyh.sshy@sinopec.com

4. Description of Samples:

There were 1 PTA sample and 1 QTA (Qualified Terephthalic Acid) sample used for this study. Both of them were provided by Mitsubishi Chemical Corporation.

5. Interlaboratory Study Instructions

- 5.1 Dissolve PTA/QTA sample in ammonium hydroxide solution.
- 5.2 Make sure the chromatogram resembles peaks shown in D7884 Fig.1.
- 5.3 Inject appropriate amount of sample into the instrument.
- 5.4 Review the result of the test.

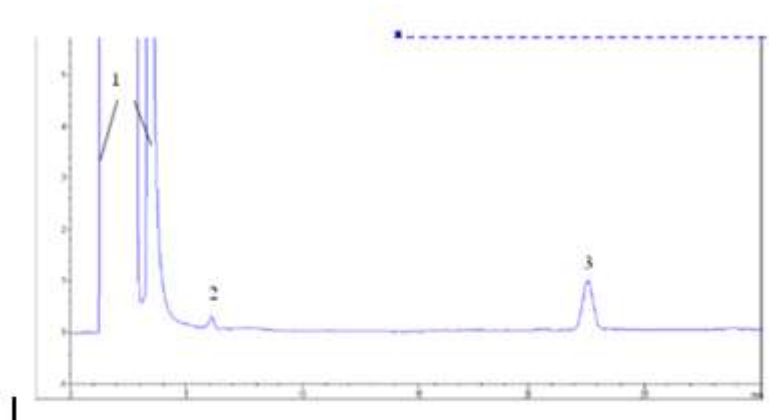


FIG. 1 Chromatogram of a PTA Sample (Reverse Phase HPLC) 1—PTA, 2—4-CBA, 3—p-TOL

6. Description of Equipment/Apparatus¹:

6.1 *High Performance Liquid Chromatograph (HPLC)*-Any HPLC capable of pumping the mobile phase at flow rates between 0.1 and 2.0 mL/min, with a pressure between 0 and 40 MPa and a pulsation of less than 1% full scale deflection under the test conditions described in D7884 Table 1. The S/N (signal to noise) ratio should be 3:1 or greater for 2 mg/kg 4-CBA and 10 mg/kg p-TOL.

¹ The equipment listed was used to develop a precision statement for D7884-13. This listing is not an endorsement or certification by ASTM International.
Copyright © ASTM International, 100 Barr Harbor Drive, PO Box C700, West Conshohocken, PA 19428-2959, United States.